



Nelson & Nelson Mfg.
5210 Stadium Blvd, Suite C
Jonesboro AR 72404
870-268-6393 : Cell 219-1019

Installation Instructions 2-18-21

Model SF3-GRL

Front Grille Guard for the F3 Standard and Sports Grilles

Steps needed to install your F3 Grille Guard

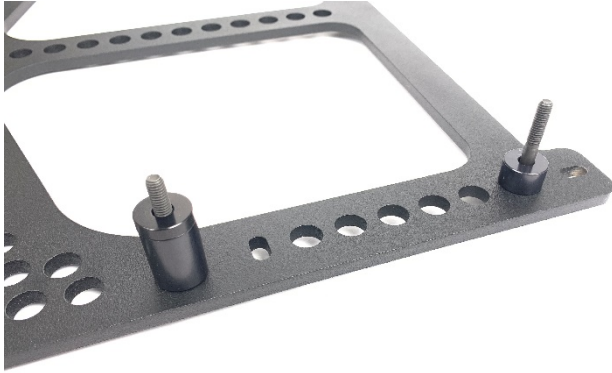


1.- Installing the new Grille Guard is simple. Only four bolts! First remove the LOWER 4 factory 6mm bolts as shown below. These are the two outside bolts each side.

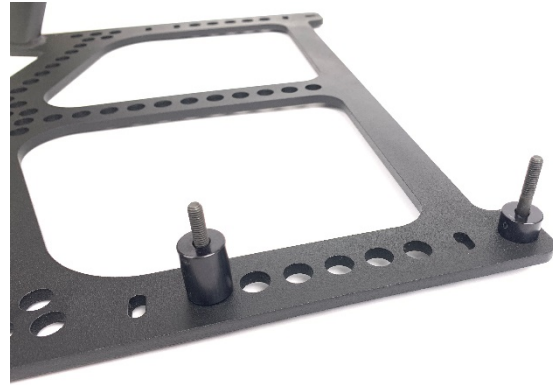


Underside view of a typical F3

2.- With the supplied new bolts & spacers, the skid plate of the Grille Guard has 2-sets of 4 bolt slots. Set closest to the front grille is for the standard F3 front grille on your Spyder and the second set, the last set of slots allow the Sports Grille Guard which mounts the Grille Guard outwards from the Spyder to allow for the Larger Sports Grille.



**Standard Grille Bolt Locations
6mmx50 mm front bolts**



**Sports Grille Bolt Locations
6mmx45mm rear bolts**

3.- As you place the unit to mount, place a bolt in each slot as shown below. The larger spacer goes in the front slots for F3 models with that standard grille. The F3 standard grilles will use a large spacer and one 3/16" spacer. The F3's with a Sports Grille will use the second set of slots towards the back of the mount that forces the grill forward to allow for the Sports Grill. You will only use the large front spacer as the 3/16" is not needed. The thicker smaller spacer is used on the rear on the standard F3 grille and the Sports Grille. Do this for all 4 bolts and spacer. Be sure to apply **Blue LocTite** on each bolt.

4.- The slots allow for alignment of the center Grille Guard with the F3 center Grille.
Once placed in location tighten bolts.



Shown with Optional Driving Lights

Completed Install with Optional LED Driving Lights!

We thank you for purchasing our F3 Grille Guard. Today we know the needs for Quality Accessories, and we have solved that demand with a stylish system that compliments the design of your F3!